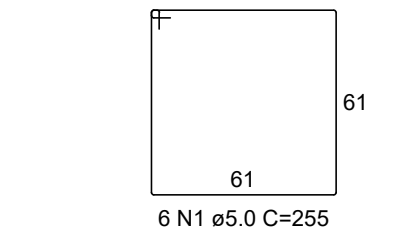
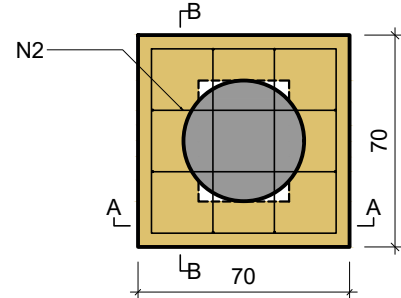
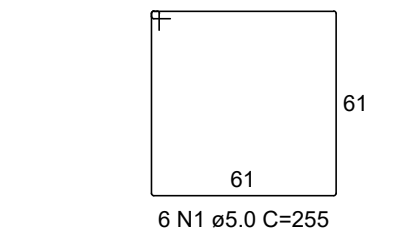
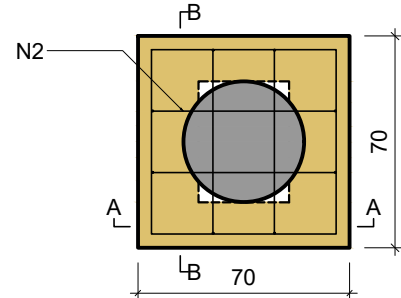


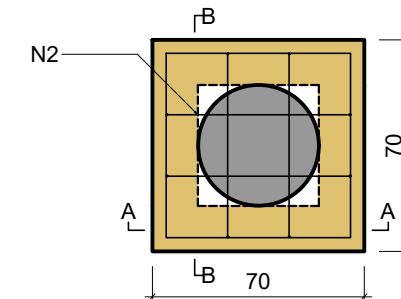
B11  
1xC40  
PLANTA  
ESC 1:25



B13  
1xC40  
PLANTA  
ESC 1:25

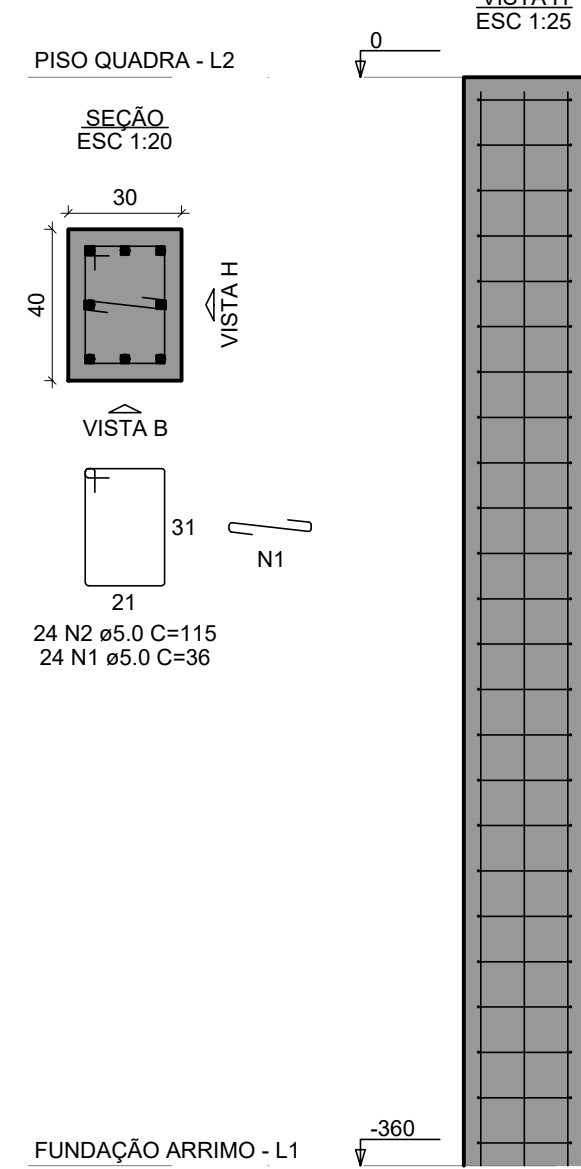


B16  
1xC40  
PLANTA  
ESC 1:25

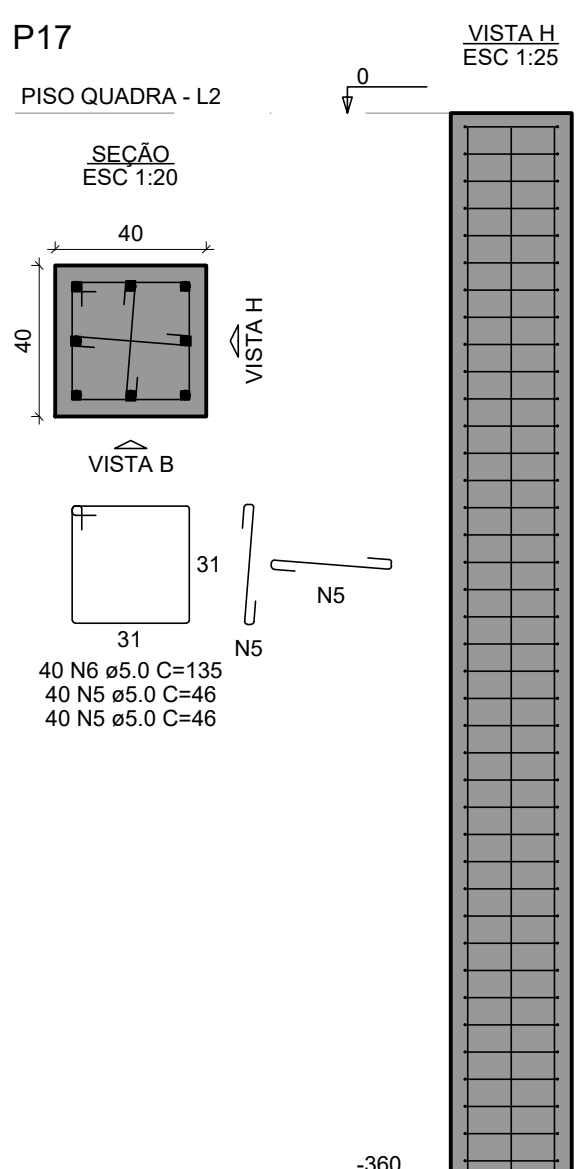
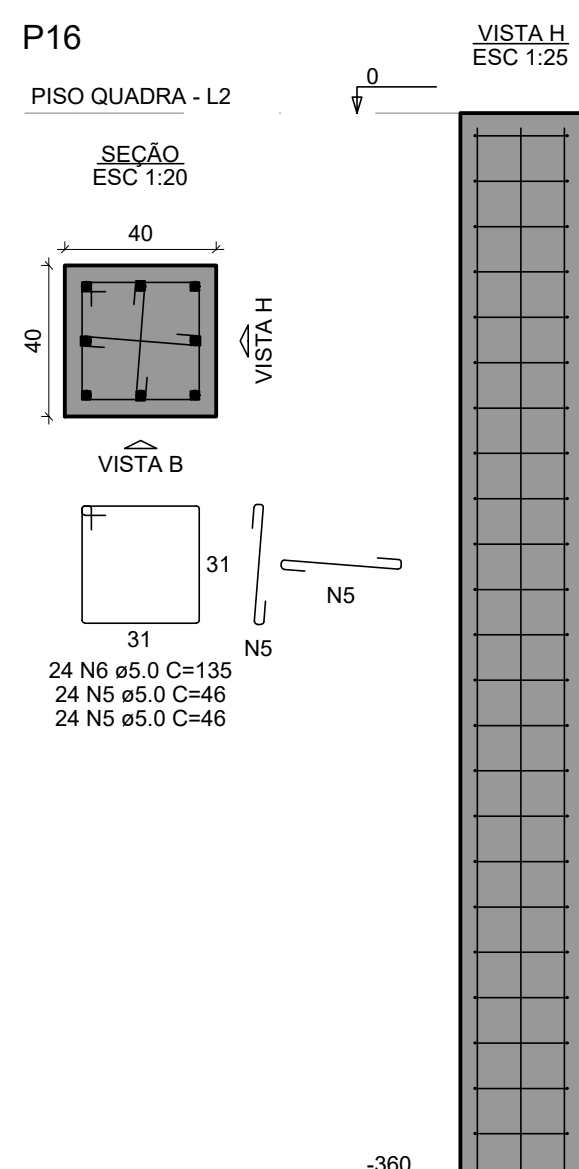
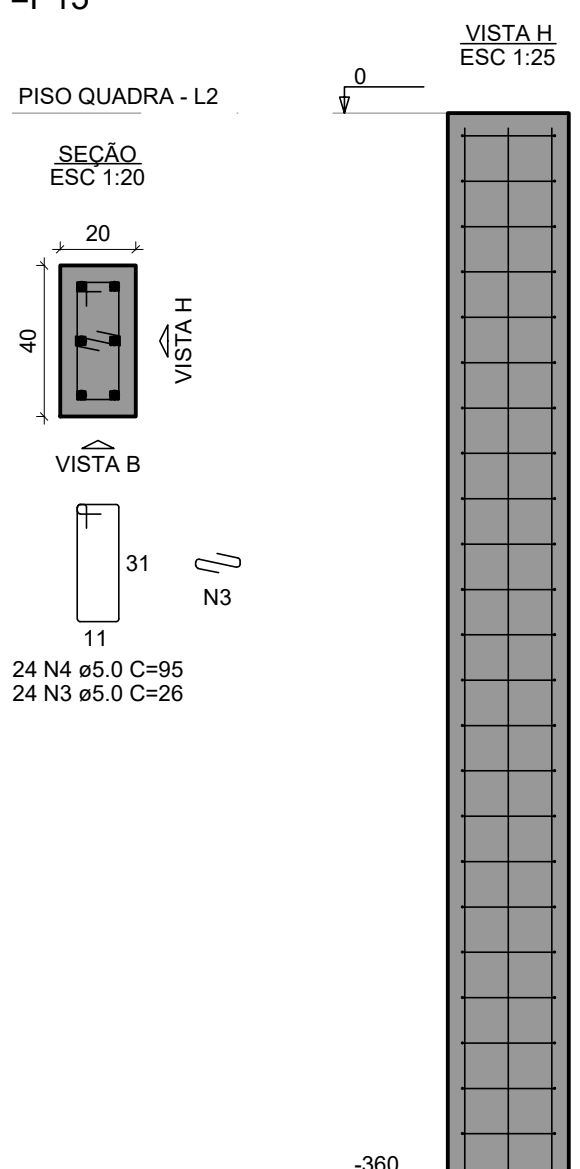


# Pilares contenção

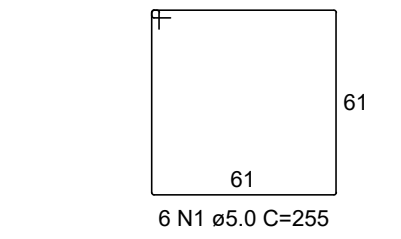
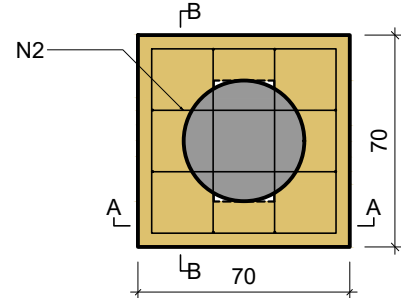
P1=P3=P5=P7=P9=P11=P13



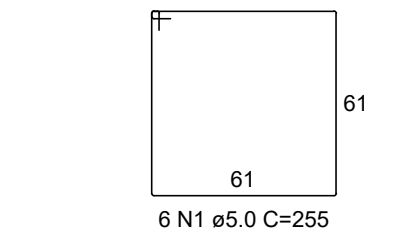
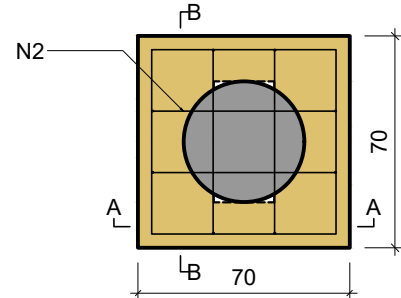
P2=P4=P6=P8=P10=P12=P14=P15



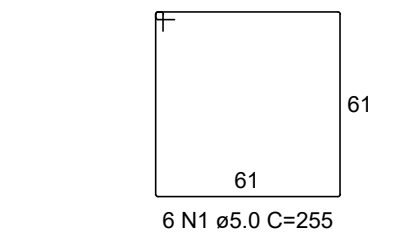
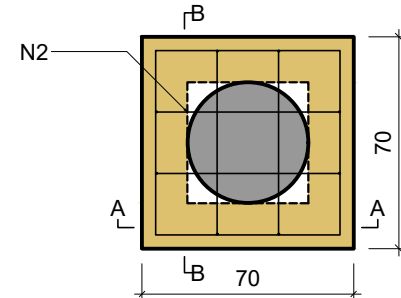
B12  
1xC40  
PLANTA  
ESC 1:25



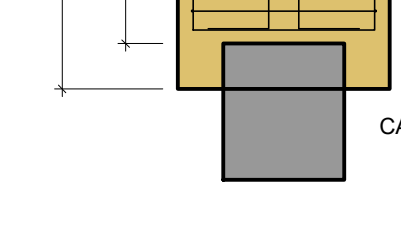
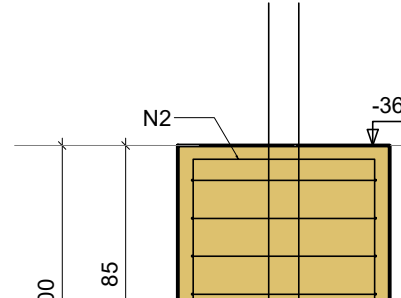
B14  
1xC40  
PLANTA  
ESC 1:25



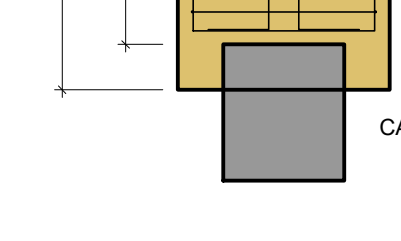
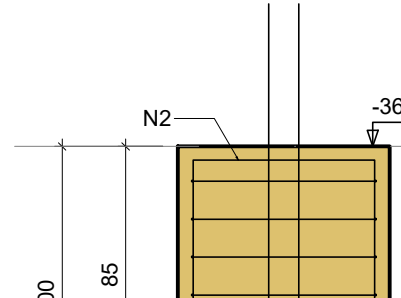
B17  
1xC40  
PLANTA  
ESC 1:25



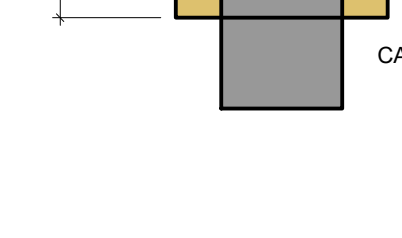
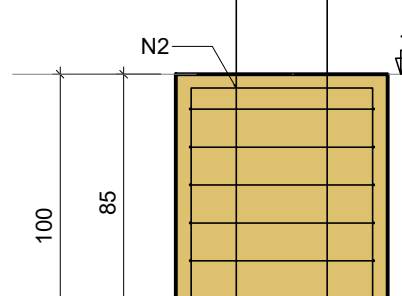
B12  
1xC40  
PLANTA  
ESC 1:25



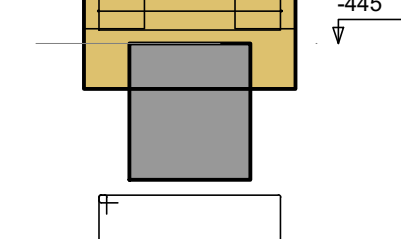
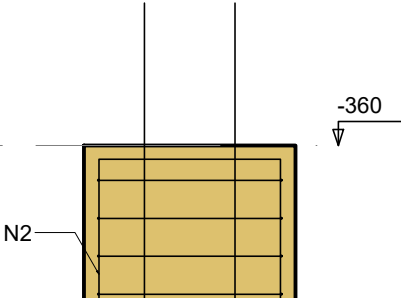
B14  
1xC40  
PLANTA  
ESC 1:25



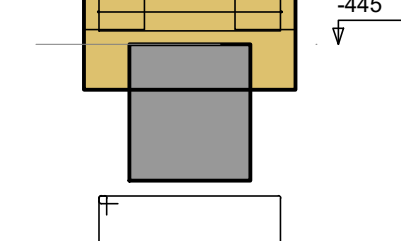
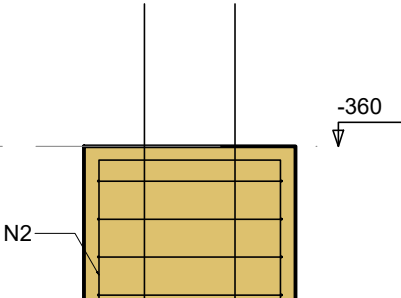
B17  
1xC40  
PLANTA  
ESC 1:25



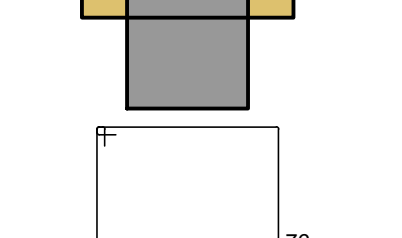
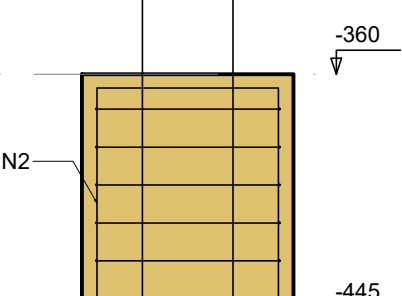
B12  
1xC40  
PLANTA  
ESC 1:25



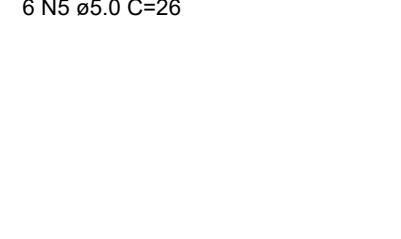
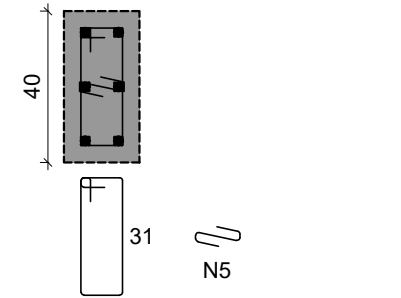
B14  
1xC40  
PLANTA  
ESC 1:25



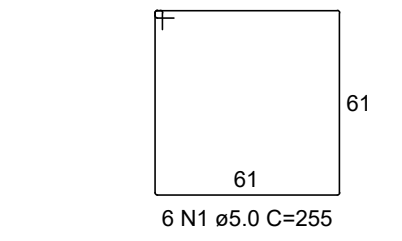
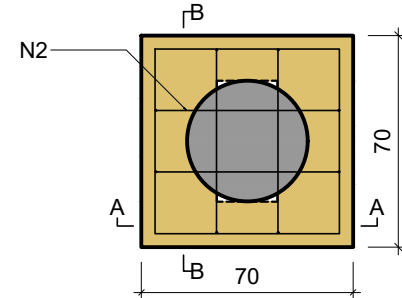
B17  
1xC40  
PLANTA  
ESC 1:25



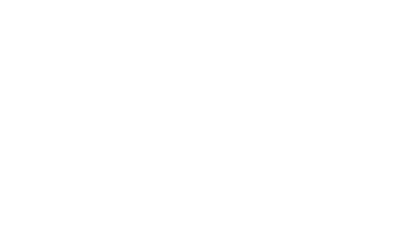
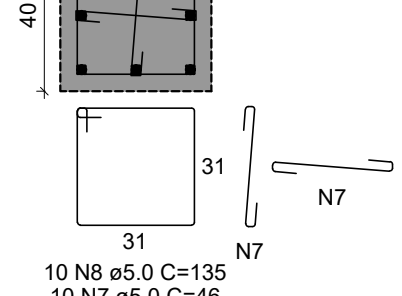
B12  
1xC40  
PLANTA  
ESC 1:25



B15  
1xC40  
PLANTA  
ESC 1:25



B17  
1xC40  
PLANTA  
ESC 1:25



RELAÇÃO DO AÇO

AÇO	N	DIAM (mm)	QUANT	C.UNIT (cm)	C.TOTAL (cm)
CA60	1	5.0	168	36	6048
CA60	2	5.0	168	115	19320
CA60	3	5.0	192	28	4992
CA60	4	5.0	192	95	18240
CA60	5	5.0	128	46	5888
CA60	6	5.0	64	135	8640
CA50	7	12.5	120	355	42600

RESUMO DO AÇO

AÇO	DIAM (mm)	C.TOTAL (m)	PESO + 10% (kg)
CA50	12.5	426	451.4
CA60	5.0	631.3	107

Volume de concreto (C-25) = 6.48 m³  
Área de forma = 55.84 m²

RELAÇÃO DO AÇO

AÇO	N	DIAM (mm)	QUANT	C.UNIT (cm)	C.TOTAL (cm)
CA60	1	5.0	42	255	10710
CA60	2	5.0	28	283	7924
CA60	3	5.0	12	36	432
CA60	4	5.0	12	115	1380
CA60	5	5.0	18	26	468
CA60	6	5.0	18	95	1710
CA60	7	5.0	32	46	1472
CA50	8	12.5	50	144	7200

RESUMO DO AÇO

AÇO	DIAM (mm)	C.TOTAL (m)	PESO + 10% (kg)
CA50	12.5	72	76.3
CA60	5.0	262.6	44.5

Volume de concreto (C-25) = 3.30 m³  
Área de forma = 19.60 m²

TRAÇO CONCRETO PREPARADO IN LOCO  
(CONFORME CARACTERÍSTICAS FÍSICAS ESPECIFICADAS)

FCX 25 MPa (C25 EM GERAL - S100)  
TRAÇO EM PESO (CEMENTO : AREIA : BRITA 01) = 1 : 2,17 : 2,94  
TRAÇO EM VOLUME (CEMENTO : AREIA : BRITA 01) = 1 : 2 : 2,5  
ÁGUA: 30 LITROS / SACO DE CIMENTO (A/C=0,60) - \*ÁREA SECA  
CONSUMO CIMENTO: 344 kg/m³  
ALTURA DAS PADILHAS (BASE RETANGULAR 35 x 45cm):  
ÁREA: 28,70 cm (H1)  
BRITA 01: 26,10 (H2)

FCX 30 MPa (C30 EM GERAL - S100)  
TRAÇO EM PESO (CEMENTO : AREIA : BRITA 01) = 1 : 2,17 : 2,44  
TRAÇO EM VOLUME (CEMENTO : AREIA : BRITA 01) = 1 : 2 : 2,5  
ÁGUA: 27,5 LITROS / SACO DE CIMENTO (A/C=0,55) - \*ÁREA SECA  
CONSUMO CIMENTO: 374 kg/m³  
ALTURA DAS PADILHAS (BASE RETANGULAR 35 x 45cm):  
ÁREA: 28,70 cm (H1)  
BRITA 01: 26,10 (H2)

PARÂMETROS DE CÁLCULO PARA VERIFICAÇÃO:

CEMENTO CP II 32

ÁREA DE QUARTZO - MÓDULO DE ABRAHMS = 3,16

AGREGADO GRAVADO: BRITA 1 (DIÂMETRO MÁX. 19mm)

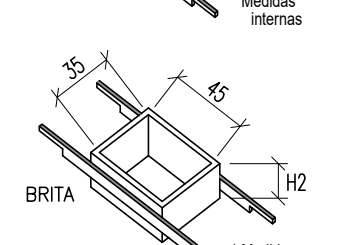
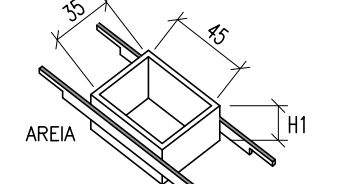
DENSIDADE ESPECÍFICA APARENTE (kg/m³):

AREIA (1540) - BRITA (1390) - CIMENTO (1420)

PESO ESPECÍFICO (kg/m³):

AREIA (2620) - BRITA (2560) - CIMENTO (3050)

\*\* ESTUDO DE DOSAGEM DO CONCRETO (NBR 12.655/2015 - ITEM 5.6) - RESPONSABILIDADE DO ENGENHEIRO DE EXECUÇÃO DA OBRA:  
CORRIGIR TRAÇO CONFORME COEFICIENTE DE INCHAMENTO DA ÁREA E RESPECTIVA TAXA DE UMIDADE  
PARA DETERMINAR TEORIEDADE DA ÁREA NO CAMPO UTILIZAR "MÉTODO DA FRIGIDEIRA" OU PELO "MÉTODO SPEEDY"



PADILHAS - DIMENSÕES



Prefeitura Municipal de  
**MOEDA**



PROJETO DE FUNDAÇÃO PARA CONSTRUÇÃO DE QUADRA POLIESPORTIVA

PROPRIETÁRIO

LOCAL DE INTERVENÇÃO

LOCAL: Rua Misael da Cruz  
BAIRRO: Taquaraçu  
COORDENADAS:  
Latitude: 20°21'51.23"S  
Longitude: 44° 58'58.69"O

PREFEITURA MUNICIPAL DE MOEDA - MG

RESPONSÁVEL TÉCNICO

ESCALA

DATA

INDICADA

Fevereiro 2026

FORMATO

FOLHA

A1

3 / 6

CONTEUDO

• Detalhamento de blocos de fundação.

OBSERVAÇÕES

• Cotas do projeto em centímetros

CÓDIGO: PROJ ESTRUT FUNDAÇÃO QUADRA POLIESPORTIVA\_REV-00